

**BDM Data Standard – Learner Attendance
Period
v0.2
09 November**

Licence and IPR Statement

Use of Crown copyright material © Crown copyright 2009

The Information Standards Board (ISB) is an internal advisory body to the Department for Children, Schools and Families (DCSF) and the Department for Business, Innovation and Skills (BIS) which are Crown bodies. The information we produce is subject to Crown copyright, which is administered by the Office of Public Sector Information. Unless otherwise stated on individual documents or pages, the following copyright statement applies to material found on this site.

Authorisation to reproduce any information in this standard which is identified as being the copyright of a third party must be obtained from the copyright holders concerned.

Research and private study

The Crown copyright protected information in this standard may be reproduced free of charge in any format or medium in order to carry out research for No-commercial purposes, for private study or for internal circulation within an organisation. This is subject to the material being reproduced accurately and not used in a misleading context. The material must be acknowledged as Crown copyright and you must give the title of the source document/publication.

Licences

Copying Crown copyright protected material for re-use, distribution or publication, requires a licence. You can apply for a Click-Use licence online, by email or by writing to:

Office of Public Sector Information
Information Policy Team
Kew
Richmond
Surrey
TW9 4DU
Email: licensing@opsi.gsi.gov.uk

Document Version History

Version	Status	Date	Modified by	Change description	Section & line Ref	Changed from	Changed to	Effects of change
0.1	Draft	22/09/2009	DFoster	Initial Draft	-	-	-	-
0.2	Draft	09/11/2009	LHogarth	Title Change Document Map updated to show Side Notes and Appendix replaced with a reference to new document Amended definitions New Code Lists				

Contents

Introduction	2
Data Standard.....	4
Entity relationships	4
Diagram Notation.....	4
Entity and Attribute Naming Standards and Conventions used	4
Entity Definition Model	5
Attribute Model.....	6
Data definitions.....	7
Entity: Learner Period Attendance	7

Introduction

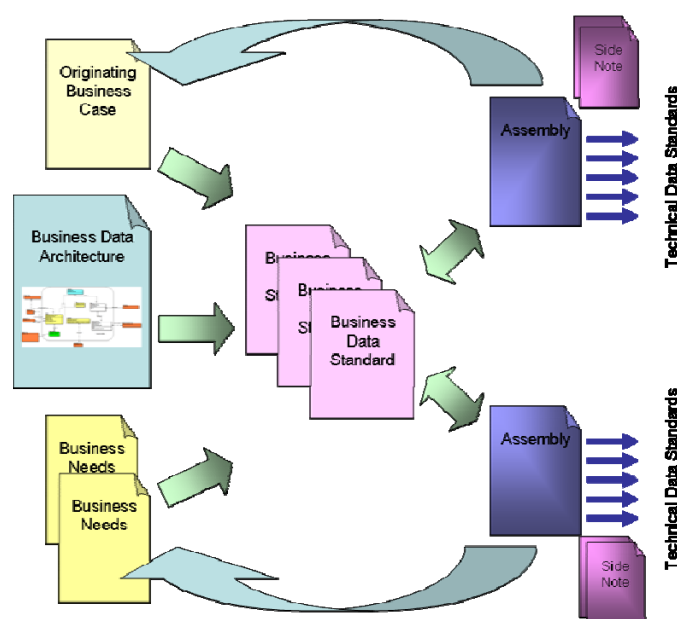
This Business Data Standard has been designed to satisfy all Education Skills and Children’s Services (ESCS) business needs to exchange information about stakeholder schedules.

It describes data that relates to stakeholder periods and schedules. Stakeholder periods describe a collection of timeslots (i.e. together periods form a calendar). Stakeholder schedules describe which periods a stakeholder is using and a general purpose they are using the period for.

A Business Data Standard is defined in response to a business need captured in a Business Case. In development, every effort is made to ensure that the Business Data Standard is capable to support all ESCS business needs for the same data. The Business Case may in fact give rise to a number of Business Data Standards, and the way that the standards are associated to meet the originating business need is shown via an “Assembly” document.

Each Assembly may in addition need some guidance regarding Data Quality issues and implementation issues and these are contained in “Side Notes”.

The related documents are shown in the following diagram:



This Business Data Standard shows how information relating to Stakeholder Period Attendance shall be structured into entities and relationships according to the ESCS Business Data Architecture and enumerates and defines each information attribute in terms of:

- The relationships between entities in this standard and further entities defined in other standards

- The semantics, or meaning, of each entity and each attribute
- The data type, field length and construction rules for each attribute in an encoding-independent manner.
- Where the value of an attribute is to be defined by a list of permitted values (a “code list”), a reference to the relevant code list standard
- Where the standard relates to information defined by a standard from an external organisation (ISO, BSI, CEN etc) then this will also be noted.
- Any business rules (e.g. mandatory status) that are true for every business use of the standard.

Many ESCS ICT systems will need to define Technical Data Standards that specify an encoding schema for data exchange and may include implementation-specific details. Such Technical Data Standards may conform to this and other ESCS ISB Business Data Standards. Those that do conform can be assured that their data will be interchangeable with any other conformant systems. A Technical Data Standard may indicate that within the scope of its use one or more attributes are Mandatory.

Data Standard

Entity relationships

The following diagrams shows the entities covered in this standard and their relationships to each other. The diagrams are:

- Entity Definition Model – A high level diagram extracted from the ESCS Business Data Architecture showing just the entities, their descriptions and the relationships between the entities.
- Attribute Model – A lower level diagram also extracted from the ESCS Business Data Architecture showing the entities and the names of their attributes. Entities are divided into two sections. The top section contains only attributes that form the primary key of the entity and the remaining attributes are in the bottom section.

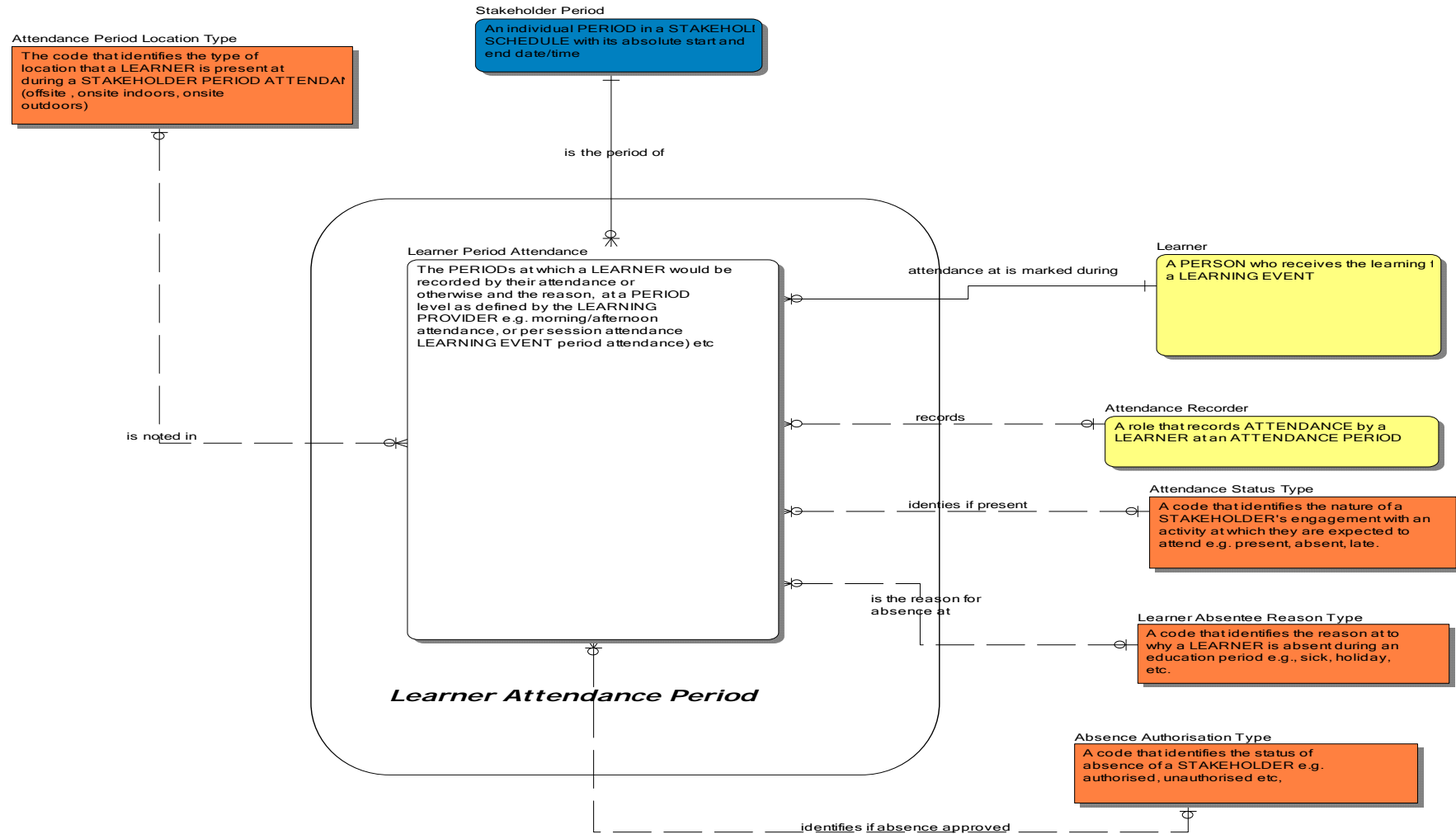
Diagram Notation

The Notation used follows the Business Data Architecture Document Notation (refer to ESCS Business Data Architecture document for further details). Only those entities within the boundary square are to be part of the particular data standard. Those entities outside of the boundary square are for context purposes only, or are separate reference data (orange coloured entities)

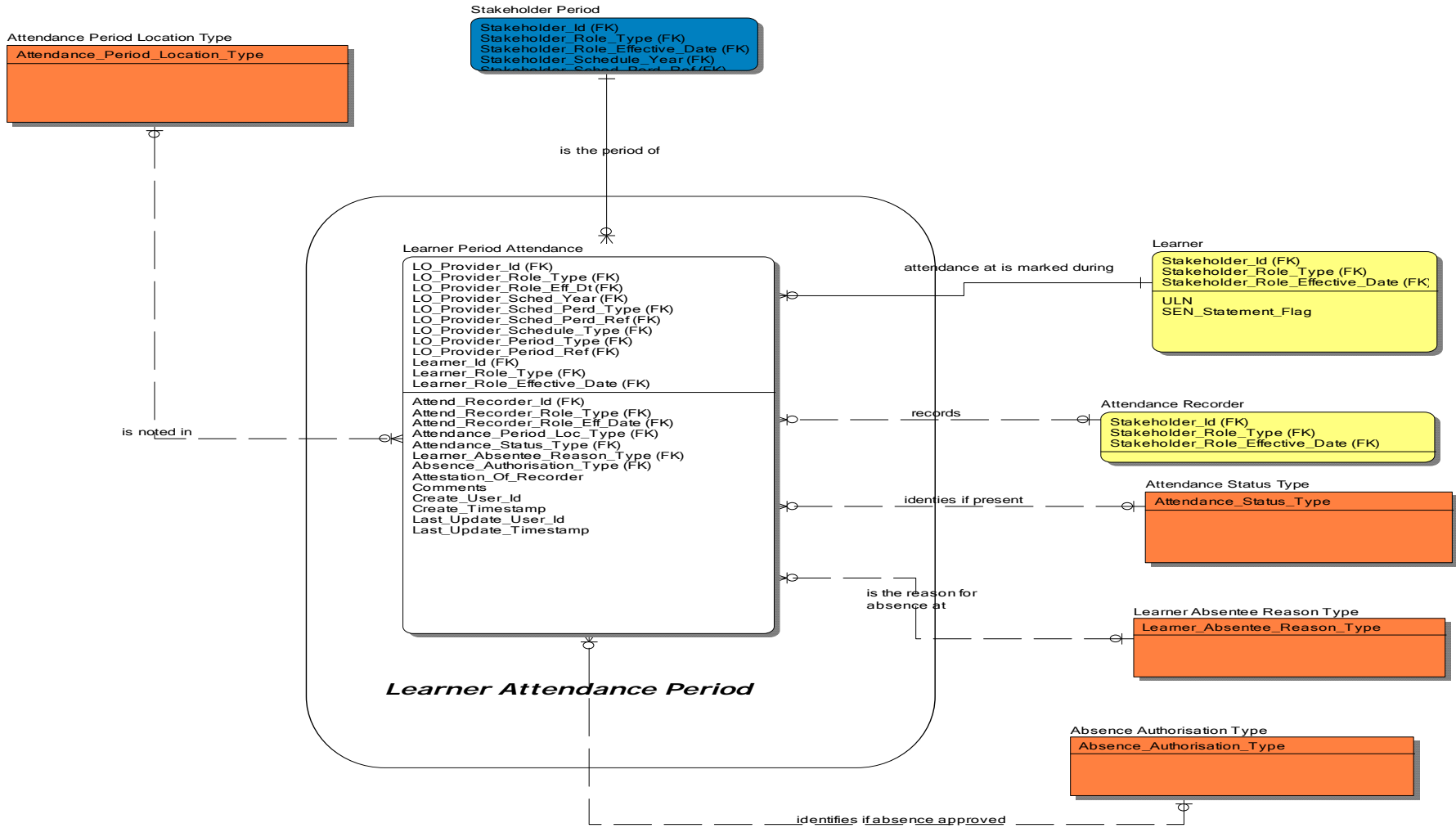
Entity and Attribute Naming Standards and Conventions used

The standards for Business Data Architecture naming and conventions used for this development is Business Data Architecture Naming Standards and Conventions Vs 1.2 by Steve Palmer.

Entity Definition Model



Attribute Model



Data definitions

The following section further describes the entities and their attributes covered in this standard.

PK = Primary Key Attribute

FK =Foreign Key Attribute

M = Mandatory Attribute

NOTE: Data Types are defined according to the conventions set out in the document “BDM Data Standard – Data Type Expressions”

Entity: Learner Period Attendance

The PERIODs at which a LEARNER would be recorded by their attendance or otherwise and the reason, at a PERIOD level as defined by the LEARNING PROVIDER e.g. morning/afternoon attendance, or per session attendance LEARNING EVENT period attendance) etc

Attribute Name	Attribute Definition	P K	F K	M	Datatype	Parent Entity	Parent Attribute	Code List
LO_Provider_Id	A value that denotes and distinguishes the STAKEHOLDER	Y	Y	Y	Simple_String (1, 32)	Stakeholder Period	Stakeholder_I d	

LO_Provider_Role_Type	A Code that identifies a specific role of a STAKEHOLDER.e.g. LEARNER, LEARNING OPPORTUNITY PROVIDER. This attribute may appear prefixed with the role that is currently being undertaken. In this event the role_type is that specifically named role	Y	Y	Y	Simple_String (1, 50)	Stakeholder Period	Stakeholder_Role_Type	
LO_Provider_Role_Eff_Dt	The date from which the STAKEHOLDER is ready and approved (if necessary) to act in the specific role. This attribute may appear prefixed with a role type. In this event the effective date is that of the prefixed role type.	Y	Y	Y	Simple_Date_Time	Stakeholder Period	Stakeholder_Role_Effective_Date	
LO_Provider_Sched_Year	The Year for which this STAKEHOLDER SCHEDULE is applicable. The type of year (Calendar, Academic, Financial) is identified by the STAKEHOLDER SCHEDULE TYPE	Y	Y	Y	Simple_Date_Time	Stakeholder Period	Stakeholder_Sched_Year	
LO_Provider_Sched_Perd_Type	The code that identifies the type of period (e.g. year, term, week, day, period)	Y	Y	Y	Simple_String(1,50)	Stakeholder Period	Stakeholder_Sched_Perd_Type	
LO_Provider_Sched_Perd_Ref	A code that denotes and distinguishes the time period that will be used in a schedule. e.g. Period 1, Week 1, Spring Term, etc	Y	Y	Y	Simple_String(1,50)	Stakeholder Period	Stakeholder_Sched_Perd_Ref	
LO_Provider_Schedule_Type	A Code that identifies the category of significance of STAKEHOLDER SCHEDULE that may exist e.g., Academic Year Schedule, Financial Schedule	Y	Y	Y	Simple_String(1,50)	Stakeholder Period	Stakeholder_Schedule_Type	

LO_Provider_Period_Type	The code that identifies the duration of the schedule period (e.g. year, term, week, day, period)	Y	Y	Y	Simple_String(1,50)	Stakeholder Period	Period_Type	
LO_Provider_Period_Ref	A code that denotes and distinguishes the time period that will be used in a schedule. e.g. Period 1, Week 1, Spring Term, etc	Y	Y	Y	Simple_String(1,50)	Stakeholder Period	Period_Reference	
Learner_Id	A value that denotes and distinguishes the STAKEHOLDER	Y	Y	Y	Simple_String(1, 32)	Stakeholder Role	Stakeholder_Id	
Learner_Role_Type	A Code that identifies a specific role of a STAKEHOLDER.e.g. LEARNER, LEARNING OPPORTUNITY PROVIDER. This attribute may appear prefixed with the role that is currently being undertaken. In this event the role_type is that specifically named role	Y	Y	Y	Simple_String(1, 50)	Stakeholder Role	Stakeholder_Role_Type	
Learner_Role_Effective_Date	The date from which the STAKEHOLDER is ready and approved (if necessary) to act in the specific role. This attribute may appear prefixed with a role type. In this event the effective date is that of the prefixed role type.	Y	Y	Y	Simple_Date_Time	Stakeholder Role	Stakeholder_Role_Effective_Date	
Attend_Recorder_Id	A value that denotes and distinguishes the STAKEHOLDER	N	Y	N	Simple_String(1, 32)	Stakeholder Role	Stakeholder_Id	

Attend_Recorder_Role_Type	A Code that identifies a specific role of a STAKEHOLDER.e.g. LEARNER, LEARNING OPPORTUNITY PROVIDER. This attribute may appear prefixed with the role that is currently being undertaken. In this event the role_type is that specifically named role	N	Y	N	Simple_String (1, 50)	Stakeholder Role	Stakeholder_Role_Type	
Attend_Recorder_Role_Eff_Date	The date from which the STAKEHOLDER is ready and approved (if necessary) to act in the specific role. This attribute may appear prefixed with a role type. In this event the effective date is that of the prefixed role type.	N	Y	N	Simple_Date_Time	Stakeholder Role	Stakeholder_Role_Effective_Date	
Attendance_Period_Loc_Type	The code that characterises the nature of the location that a LEARNER is present at during a STAKEHOLDER PERIOD ATTENDANCE (offsite , onsite indoors, onsite outdoors)	N	Y	N	Simple_String(1,25)			CL_Attendance_Period_Location_Type
Attendance_Status_Type	A code that identifies the nature of a STAKEHOLDER's engagement with an activity at which they are expected to attend e.g. present, absent, late.	N	Y	N	Simple_String(1,50)			CL_Attendance_Status_Type
Learner_Absentee_Reason_Type	A code that identifies the reason at to why a LEARNER is absent during an education period e.g., sick, holiday, etc	N	Y	N	Simple_string(1,250)			CL_Learner_Absentee_Reason_Type
Absence_Authorisation_Type	A code that identifies the status of absence of a STAKEHOLDER e.g. authorised, unauthorised etc,	N	Y	N	Simple_String(1,50)			CL_Absence_Authorisation_Type

Attestation_Of_Recorder	Proof of the authority of the person recording the ATTENDANCE e.g. digital signature, secure audit record etc	N	N	N	Simple_String(1,255)			
Comments	To allow the recording of any information related to this attendance period such as whether the learner was assessed as a result of continued absence etc. This is to accommodate more detailed assessment and outcome information that will be provided in Phase II	N	N	N	Simple_String(1,2000)			
Create_User_Id	The user id who created this original data record in the source system - used for traceability	N	N	N	Simple_String(1,35)			
Create_Timestamp	The Date and Time of when this record was first created in the source system -- used for traceability	N	N	N	Simple_Date_Time			
Last_Update_User_Id	The user id who last updated this data record in the source system - used for traceability	N	N	N	Simple_String(1,35)			
Last_Update_Timestamp	The Date and Time of when this record was last updated in the source system -- used for traceability	N	N	N	Simple_Date_Time			