

## **BDM Data Standard – Goods or Service Provision**

0.2

03 November 2009

## **Licence and IPR Statement**

### ***Use of Crown copyright material © Crown copyright 2009***

The Information Standards Board (ISB) is an internal advisory body to the Department for Children, Schools and Families (DCSF) and the Department for Business, Innovation and Skills (BIS) which are Crown bodies. The information we produce is subject to Crown copyright, which is administered by the Office of Public Sector Information. Unless otherwise stated on individual documents or pages, the following copyright statement applies to material found on this site.

Authorisation to reproduce any information in this standard which is identified as being the copyright of a third party must be obtained from the copyright holders concerned.

### ***Research and private study***

The Crown copyright protected information in this standard may be reproduced free of charge in any format or medium in order to carry out research for non-commercial purposes, for private study or for internal circulation within an organisation. This is subject to the material being reproduced accurately and not used in a misleading context. The material must be acknowledged as Crown copyright and you must give the title of the source document/publication.

### ***Licences***

Copying Crown copyright protected material for re-use, distribution or publication, requires a licence. You can apply for a Click-Use licence online, by email or by writing to:

Office of Public Sector Information  
Information Policy Team  
Kew  
Richmond  
Surrey  
TW9 4DU  
Email: [licensing@opsi.gsi.gov.uk](mailto:licensing@opsi.gsi.gov.uk)

**Document Version History**

<b>Version</b>	<b>Status</b>	<b>Date</b>	<b>Modified by</b>	<b>Change description</b>	<b>Section &amp; line Ref</b>	<b>Charged from</b>	<b>Changed to</b>	<b>Effects of change</b>
0.1	Draft	01/11/2009	LHogarth	Initial Draft	-	-	-	-
0.2	Draft	03/11/2009	TKnowles LHogarth	New Code Lists Definitions amended Document Map updated to show Side Notes and Appendix replaced with a reference to new document				

## Contents

Introduction .....	2
Data Standard.....	4
Entity relationships .....	4
Diagram Notation.....	4
Entity and Attribute Naming Standards and Conventions used .....	4
Entity Definition Model .....	5
Attribute Model.....	6
Data definitions.....	7
Entity: Service Provision .....	7
Entity SubType: Service Provision – Staff Provision.....	10
Embedded Code Lists.....	13

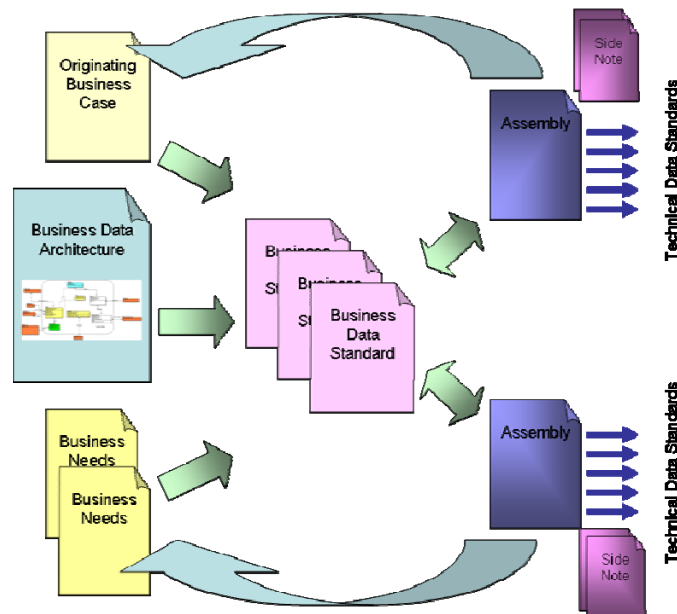
## Introduction

This Business Data Standard has been designed to satisfy all Education Skills and Children’s Services (ESCS) business needs to exchange information about Service Provision.

It describes data that relates directly to Service Provision. Service Provision is defined as the RECEIVERS record of a SUPPLIERs intention (application for or undertaking of) for a SERVICE PROVISION. This may result in a new STAKEHOLDER ROLE RELATIONSHIP if one does not already exist.

A Business Data Standard is defined in response to a business need captured in a Business Case. In development, every effort is made to ensure that the Business Data Standard is capable to support all ESCS business needs for the same data. The Business Case may in fact give rise to a number of Business Data Standards, and the way that the standards are associated to meet the originating business need is shown via an “Assembly” document. Each Assembly may in addition need some guidance regarding Data Quality issues and implementation issues and these are contained in “Side Notes”.

The related documents are shown in the following diagram:



Many ESCS ICT systems will need to define Technical Data Standards that specify an encoding schema for data exchange and may include implementation-specific details. Such Technical Data Standards may conform to this and other ESCS ISB Business Data Standards. Those that do conform can be assured that their data will be interchangeable with any other conformant systems. A Technical Data Standard may indicate that within the scope of its use one or more attributes are Mandatory.

This Business Data Standard shows how information relating to Service

Provision shall be structured into entities and relationships according to the ESCS Business Data Architecture and enumerates and defines each information attribute in terms of:

- The relationships between entities in this standard and further entities defined in other standards
- The semantics, or meaning, of each entity and each attribute
- The data type, field length and construction rules for each attribute in an encoding-independent manner.
- Where the value of an attribute is to be defined by a list of permitted values (a “code list”), a reference to the relevant code list standard
- Where the standard relates to information defined by a standard from an external organisation (ISO, BSI, CEN etc) then this will also be noted.
- Any business rules (e.g. mandatory status) that are true for every business use of the standard.

Many ESCS ICT systems will need to define Technical Data Standards that specify an encoding schema for data exchange and may include implementation-specific details. Such Technical Data Standards may conform to this and other ESCS ISB Business Data Standards. Those that do conform can be assured that their data will be interchangeable with any other conformant systems. A Technical Data Standard may indicate that within the scope of its use one or more attributes are Mandatory.

## Data Standard

### Entity relationships

The following diagrams shows the entities covered in this standard and their relationships to each other. The diagrams are:

- Entity Definition Model – A high level diagram extracted from the ESCS Business Data Architecture showing just the entities, their descriptions and the relationships between the entities.
- Attribute Model – A lower level diagram also extracted from the ESCS Business Data Architecture showing the entities and the names of their attributes. Entities are divided into two sections. The top section contains only attributes that form the primary key of the entity and the remaining attributes are in the bottom section.

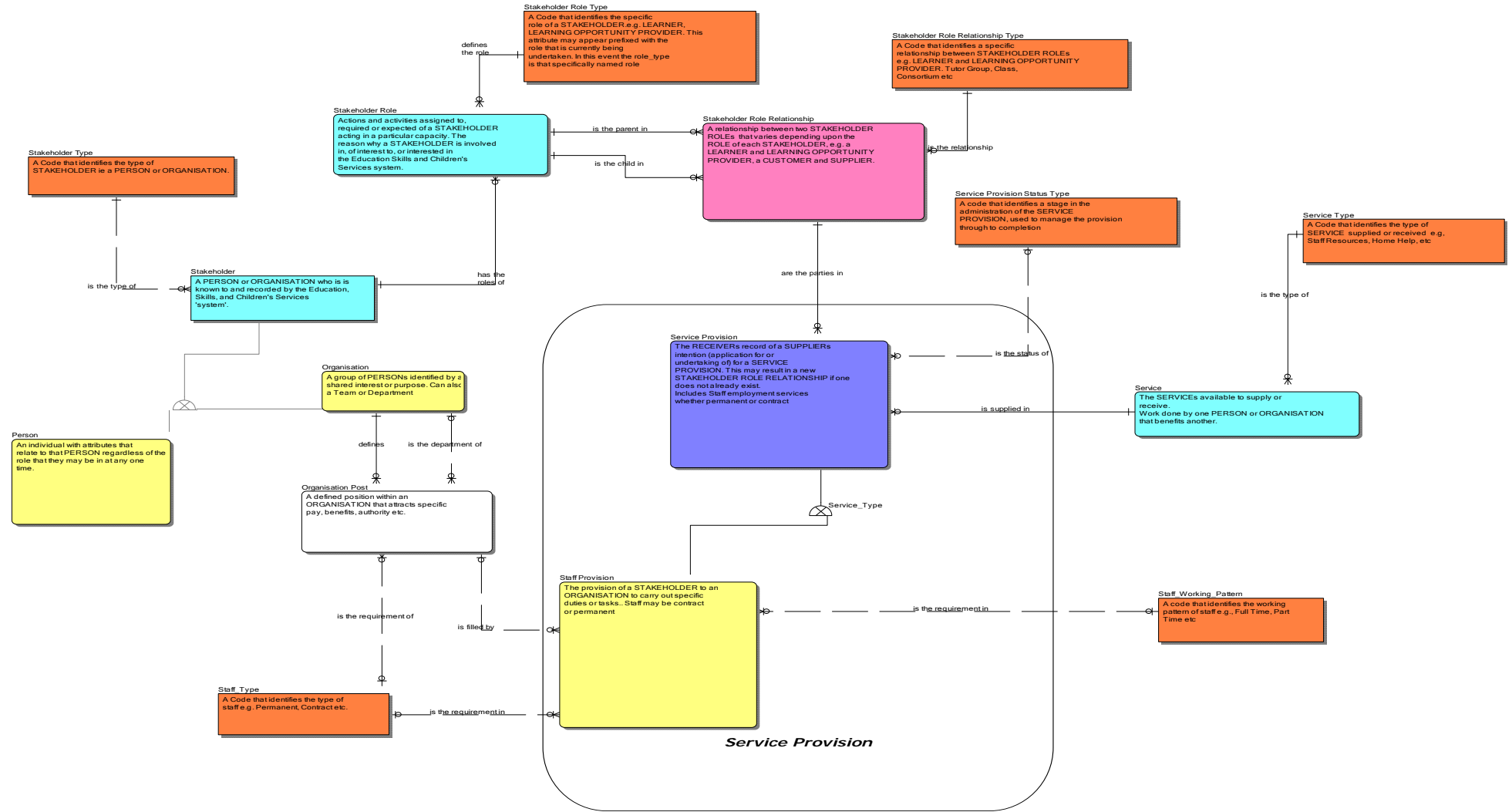
### *Diagram Notation*

The notation used follows the Business Data Architecture Document notation (refer to ESCS Business Data Architecture document for further details). Only those entities within the boundary square are to be part of the particular data standard. Those entities outside of the boundary square are for context purposes only, or are separate reference data (orange coloured entities)

### *Entity and Attribute Naming Standards and Conventions used*

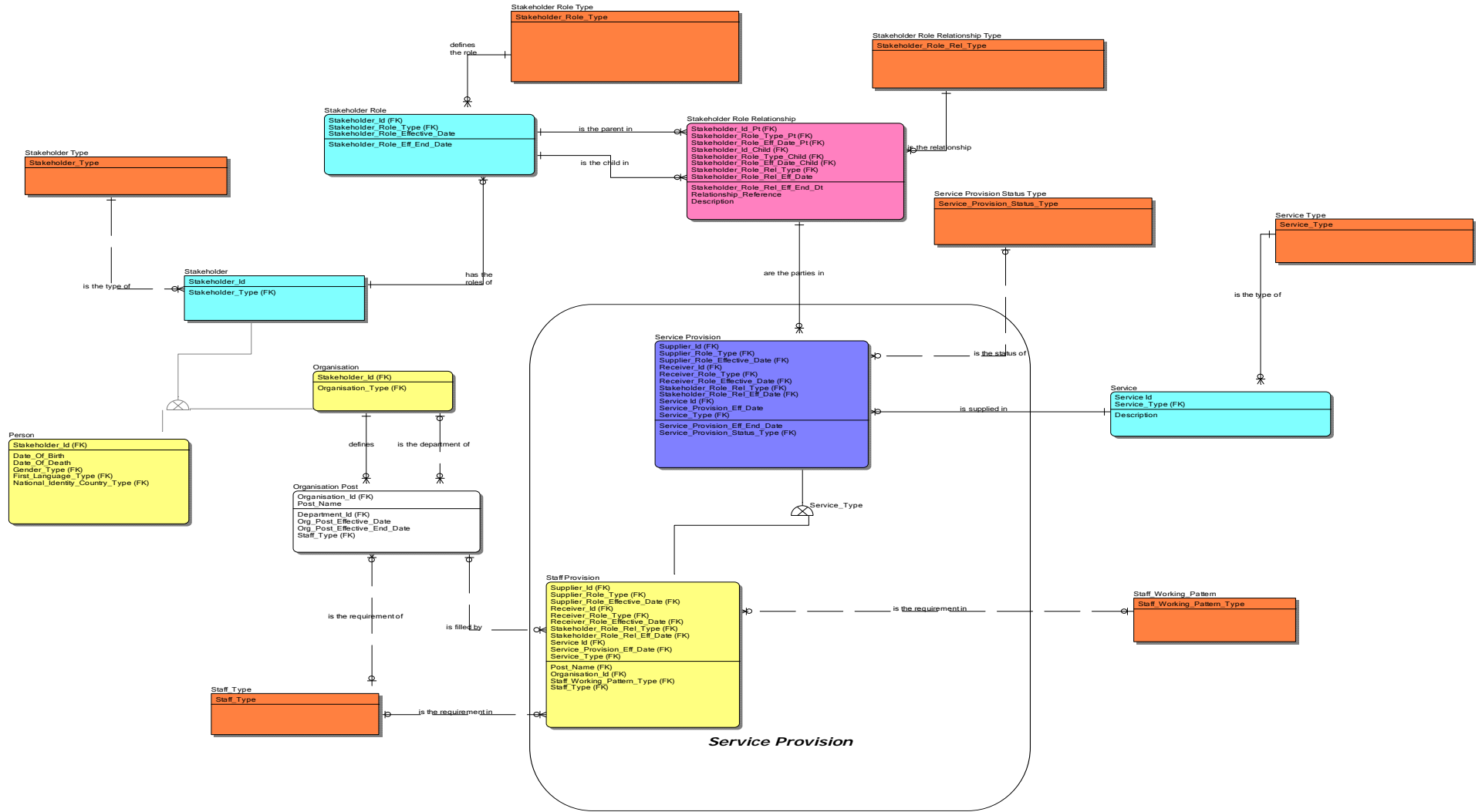
The standards for Business Data Architecture naming and conventions used for this development is Business Data Architecture Naming Standards and Conventions Vs 1.2 by Steve Palmer.

**Entity Definition Model**





**Attribute Model**



## Data definitions

The following section further describes the entities and their attributes covered in this standard.

PK = Primary Key Attribute

FK =Foreign Key Attribute

M = Mandatory Attribute

***NOTE: Data Types are defined according to the conventions set out in the document “BDM Data Standard – Data Type Expressions”***

### ***Entity: Service Provision***

The RECEIVERs record of a SUPPLIERs intention (application for or undertaking of) for a SERVICE PROVISION. This may result in a new STAKEHOLDER ROLE RELATIONSHIP if one does not already exist.

Attribute Name	Attribute Definition	P K	F K	M	Datatype	Parent Entity	Parent Attribute	Code List
Supplier_Id	A value that denotes and distinguishes the STAKEHOLDER	Y	Y	Y	Simple_String (1, 32)	Stakeholder Role Relationship	Stakeholder_I d_Pt	

Supplier_Role_Type	A Code that identifies a specific role of a STAKEHOLDER.e.g. LEARNER, LEARNING OPPORTUNITY PROVIDER. This attribute may appear prefixed with the role that is currently being undertaken. In this event the role_type is that specifically named role	Y	Y	Y	Simple_String (1, 50)	Stakeholder Role Relationship	Stakeholder Role_Type_P t	
Supplier_Role_Effective_Date	The date at which the specific role of a STAKEHOLDER.e.g. LEARNER, LEARNING OPPORTUNITY PROVIDER. Becomes effective. This attribute may appear prefixed with the role that is currently being undertaken. In this event the start date is that of the specifically named role	Y	Y	Y	Simple_Date_Ti me	Stakeholder Role Relationship	Stakeholder Role_ Role_Effectiv e_Date_Pt	
Receiver_Id	A value that denotes and distinguishes the STAKEHOLDER	Y	Y	Y	Simple_String (1, 32)	Stakeholder Role Relationship	Stakeholder_I d_Child	
Receiver_Role_Type	A Code that identifies a specific role of a STAKEHOLDER.e.g. LEARNER, LEARNING OPPORTUNITY PROVIDER. This attribute may appear prefixed with the role that is currently being undertaken. In this event the role_type is that specifically named role	Y	Y	Y	Simple_String (1, 50)	Stakeholder Role Relationship	Stakeholder Role_Type_ Child	

Receiver_Role_Effective_Date	The date at which the specific role of a STAKEHOLDER.e.g. LEARNER, LEARNING OPPORTUNITY PROVIDER. Becomes effective. This attribute may appear prefixed with the role that is currently being undertaken. In this event the start date is that of the specifically named role	Y	Y	Y	Simple_Date_Time	Stakeholder Role Relationship	Stakeholder Role_Effective_Date_Child	
Stakeholder_Role_Rel_Type	A Code that identifies a specific relationship between STAKEHOLDER ROLES e.g. LEARNER and LEARNING OPPORTUNITY PROVIDER. Tutor Group, Class, Consortium etc	Y	Y	Y	Simple_String (1, 50)	Stakeholder Role Relationship	Stakeholder_Role_Rel_Type	
Stakeholder_Role_Rel_Eff_Date	The date from which the stakeholder role relationship commenced	Y	Y	Y	Simple_Date_Time	Stakeholder Role Relationship	Stakeholder_Role_Rel_Eff_Date	
Service Id	A value that denotes and distinguishes the SERVICE	Y	Y	Y		Service	Service Id	
Service_Provision_Eff_Date	The date from which the SERVICE PROVISION commenced	Y	N	Y	Simple_Date_Time			
Service_Type	A Code that identifies the type of SERVICE supplied or received e.g, Resources, Home Help, etc	Y	Y	Y	Simple_String(1,50)	Service	Service_Type	
Service_Provision_Eff_End_Date	The date from which the SERVICE PROVISION ceased	N	N	N	Simple_Date_Time			

Service_Provision_Status_Type	A code that identifies a stage in the administration of the SERVICE PROVISION, used to manage the provision through to completion	N	Y	N	Simple_String(1,50)			CL_Service_Provision_Status_Type
-------------------------------	---	---	---	---	---------------------	--	--	----------------------------------

**Entity SubType: Service Provision – Staff Provision**

The provision of a STAKEHOLDER to an ORGANISATION to carry out specific duties or tasks. Staff may be contract or permanent

Attribute Name	Attribute Definition	P K	F K	M	Datatype	Parent Entity	Parent Attribute	Code List
Supplier_Id	A value that denotes and distinguishes the STAKEHOLDER	Y	Y	Y	Simple_String (1, 32)	Service Provision	Supplier_Id	
Supplier_Role_Type	A Code that identifies a specific role of a STAKEHOLDER.e.g. LEARNER, LEARNING OPPORTUNITY PROVIDER. This attribute may appear prefixed with the role that is currently being undertaken. In this event the role_type is that specifically named role	Y	Y	Y	Simple_String (1, 50)	Service Provision	Supplier_Role_Type	
Supplier_Role_Effective_Date	The date at which the specific role of a STAKEHOLDER.e.g. LEARNER, LEARNING OPPORTUNITY PROVIDER. Becomes effective. This attribute may appear prefixed with the role that is currently being undertaken. In this event the start date is that of the specifically named role	Y	Y	Y	Simple_Date_Time	Service Provision	Supplier_Role_Effective_Date	

Receiver_Id	A value that denotes and distinguishes the STAKEHOLDER	Y	Y	Y	Simple_String (1, 32)	Service Provision	Receiver_Id	
Receiver_Role_Type	A Code that identifies a specific role of a STAKEHOLDER.e.g. LEARNER, LEARNING OPPORTUNITY PROVIDER. This attribute may appear prefixed with the role that is currently being undertaken. In this event the role_type is that specifically named role	Y	Y	Y	Simple_String (1, 50)	Service Provision	Receiver_Role_Type	
Receiver_Role_Effective_Date	The date at which the specific role of a STAKEHOLDER.e.g. LEARNER, LEARNING OPPORTUNITY PROVIDER. Becomes effective. This attribute may appear prefixed with the role that is currently being undertaken. In this event the start date is that of the specifically named role	Y	Y	Y	Simple_Date_Time	Service Provision	Receiver_Role_Effective_Date	
Stakeholder_Role_Rel_Type	A Code that identifies a specific relationship between STAKEHOLDER ROLES e.g. LEARNER and LEARNING OPPORTUNITY PROVIDER. Tutor Group, Class, Consortium etc	Y	Y	Y	Simple_String (1, 50)	Service Provision	Stakeholder_Role_Rel_Type	
Stakeholder_Role_Rel_Eff_Date	The date from which the stakeholder role relationship commenced	Y	Y	Y	Simple_Date_Time	Service Provision	Stakeholder_Role_Rel_Eff_Date	
Service Id	A value that denotes and distinguishes the SERVICE	Y	Y	Y		Service Provision	Service Id	

Service_Provision_Eff_Date	The date from which the SERVICE PROVISION commenced	Y	Y	Y	Simple_Date_Time	Service Provision	Service_Provision_Eff_Date	
Service_Type	A Code that identifies the type of SERVICE supplied or received e.g, Resources, Home Help, etc	Y	Y	Y	Simple_String(1,50)	Service Provision	Service_Type	
Post_Name	A defined position within an ORGANISATION that attracts specific pay, benefits, authority etc.	N	Y	N	Simple_String(1,100)	Organisation Post	Post_Name	
Organisation_Id	A value that denotes and distinguishes the STAKEHOLDER	N	Y	N	Simple_String(1, 32)	Organisation Post	Organisation_Id	
Staff_Working_Pattern_Type	A code that identifies the working pattern of staff e.g., Full Time, Part Time etc	N	Y	N	Simple_String(1,50)			CL_Staff_Working_Pattern_Type
Staff_Type	A Code that identifies the type of staff e.g. Permanent, Contract etc.	N	Y	N	Simple_string(1,50)			CL_Staff_Type

## Embedded Code Lists

The following code lists are intrinsic to this data standard and are as such presented here instead of in a separate standard document.

**Description:** A Code that identifies the type of SERVICE supplied or received e.g, Resources, Home Help, etc

List Of Values <sup>1</sup>
Staff Provision

---

<sup>1</sup> Only one sub-type at present. Modelled to allow for expansion