

# **BDM Data Standard – Stakeholder**

0.3

03 November 2009



## **Licence and IPR Statement**

### ***Use of Crown copyright material © Crown copyright 2009***

The Information Standards Board (ISB) is an internal advisory body to the Department for Children, Schools and Families (DCSF) and the Department for Business, Innovation and Skills (BIS) which are Crown bodies. The information we produce is subject to Crown copyright, which is administered by the Office of Public Sector Information. Unless otherwise stated on individual documents or pages, the following copyright statement applies to material found on this site.

Authorisation to reproduce any information in this standard which is identified as being the copyright of a third party must be obtained from the copyright holders concerned.

### ***Research and private study***

The Crown copyright protected information in this standard may be reproduced free of charge in any format or medium in order to carry out research for non-commercial purposes, for private study or for internal circulation within an organisation. This is subject to the material being reproduced accurately and not used in a misleading context. The material must be acknowledged as Crown copyright and you must give the title of the source document/publication.

### ***Licences***

Copying Crown copyright protected material for re-use, distribution or publication, requires a licence. You can apply for a Click-Use licence online, by email or by writing to:

Office of Public Sector Information  
Information Policy Team  
Kew  
Richmond  
Surrey  
TW9 4DU  
Email: [licensing@opsi.gsi.gov.uk](mailto:licensing@opsi.gsi.gov.uk)

## Document Version History

Version	Status	Date	Modified by	Change description	Section & line Ref	Changed from	Changed to	Effects of change
0.1	Draft	18/09/2009	DFoster	Initial Draft	-	-	-	-
0.2	Draft	29/10/2009	LHogarth	Removal of Stakeholder Post Sub Type Definitions Amended Removal of Learning Provider Type				
0.3	Draft	03/11/2009	TKnowles LHogarth	Definitions Amended Removal of Ethnicity Document Map updated to show Side Notes and Appendix replaced with a reference to new document				

## Contents

Introduction .....	2
Data Standard.....	4
Entity relationships .....	4
Diagram Notation.....	4
Entity and Attribute Naming Standards and Conventions used .....	4
Entity Definition Model .....	5
Attribute Model.....	6
Data definitions.....	7
Entity: Stakeholder.....	7
Entity SubType: Stakeholder - Person.....	8
Entity SubType: Stakeholder – Organisation .....	8
Entity: Stakeholder Name .....	9
Entity: Stakeholder Name Component.....	10
Entity: Person Disability .....	11
Embedded Code Lists.....	12
Stakeholder_Type .....	12

## Introduction

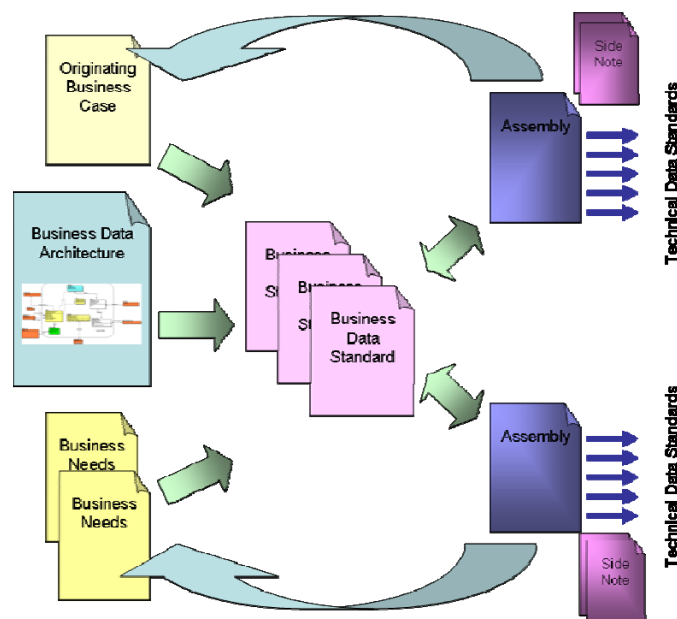
This Business Data Standard has been designed to satisfy all Education Skills and Children’s Services (ESCS) business needs to exchange information about stakeholders.

It describes data that relates directly to a stakeholder. A stakeholder is defined as a person or organisation who is known to and recorded by the Education, Skills, and Children's Services 'system'.

A PERSON or ORGANISATION.

A Business Data Standard is defined in response to a business need captured in a Business Case. In development, every effort is made to ensure that the Business Data Standard is capable to support all ESCS business needs for the same data. The Business Case may in fact give rise to a number of Business Data Standards, and the way that the standards are associated to meet the originating business need is shown via an “Assembly” document. Each Assembly may in addition need some guidance regarding Data Quality issues and implementation issues and these are contained in “Side Notes”.

The related documents are shown in the following diagram:



Many ESCS ICT systems will need to define Technical Data Standards that specify an encoding schema for data exchange and may include implementation-specific details. Such Technical Data Standards may conform to this and other ESCS ISB Business Data Standards. Those that do conform can be assured that their data will be interchangeable with any other conformant systems. A Technical Data Standard may indicate that within the scope of its use one or more attributes are Mandatory.

This Business Data Standard shows how information relating to Stakeholders (persons or organisations) shall be structured into entities and relationships according to the ESCS Business Data Architecture and enumerates and defines each information attribute in terms of:

- The relationships between entities in this standard and further entities defined in other standards
- The semantics, or meaning, of each entity and each attribute
- The data type, field length and construction rules for each attribute in an encoding-independent manner.
- Where the value of an attribute is to be defined by a list of permitted values (a “code list”), a reference to the relevant code list standard
- Where the standard relates to information defined by a standard from an external organisation (ISO, BSI, CEN etc) then this will also be noted.
- Any business rules (e.g. mandatory status) that are true for every business use of the standard.

Many ESCS ICT systems will need to define Technical Data Standards that specify an encoding schema for data exchange and may include implementation-specific details. Such Technical Data Standards may conform to this and other ESCS ISB Business Data Standards. Those that do conform can be assured that their data will be interchangeable with any other conformant systems. A Technical Data Standard may indicate that within the scope of its use one or more attributes are Mandatory.

## Data Standard

### Entity relationships

The following diagrams shows the entities covered in this standard and their relationships to each other. The diagrams are:

- Entity Definition Model – A high level diagram extracted from the ESCS Business Data Architecture showing just the entities, their descriptions and the relationships between the entities.
- Attribute Model – A lower level diagram also extracted from the ESCS Business Data Architecture showing the entities and the names of their attributes. Entities are divided into two sections. The top section contains only attributes that form the primary key of the entity and the remaining attributes are in the bottom section.

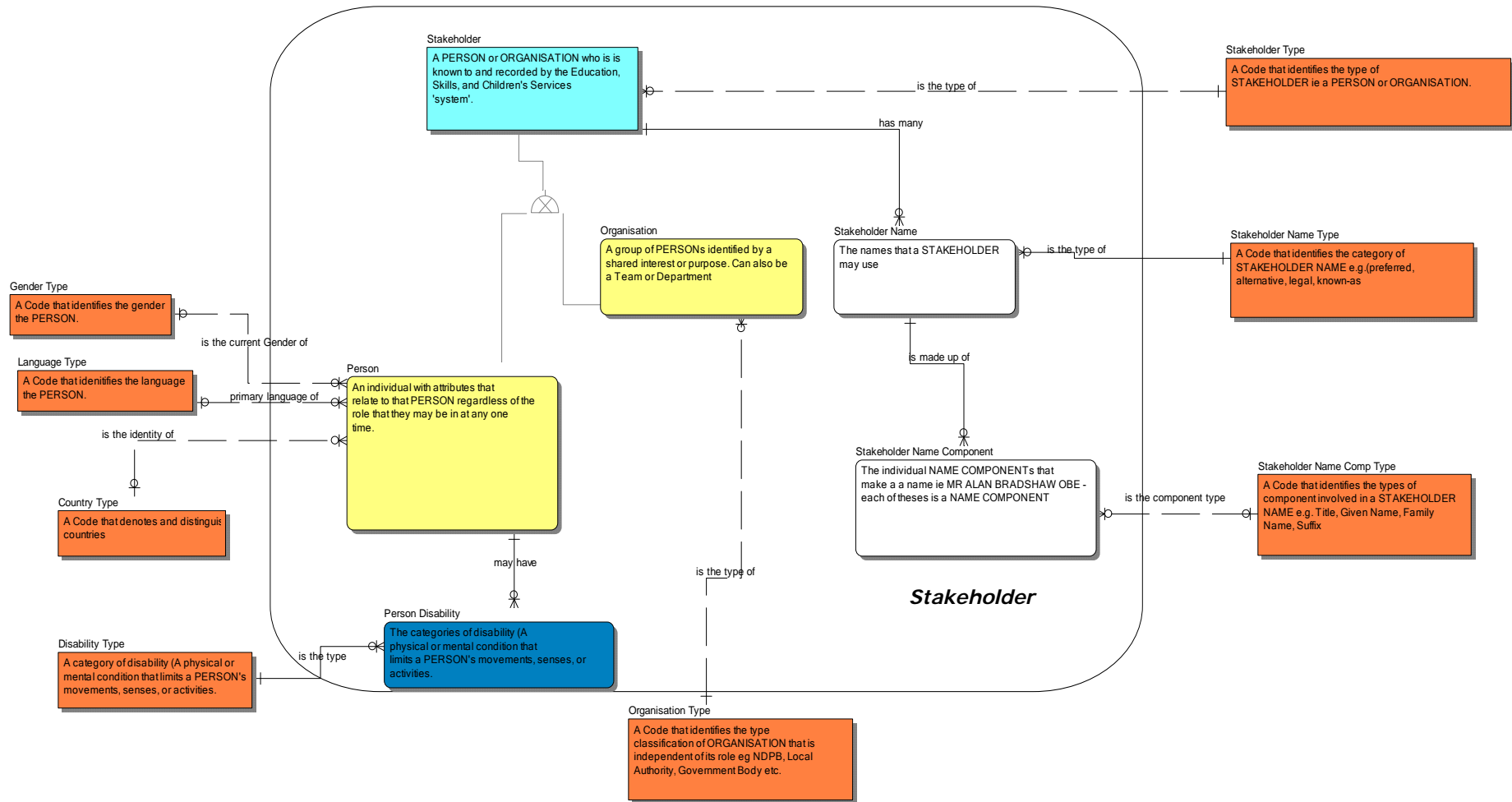
### *Diagram Notation*

The notation used follows the Business Data Architecture Document notation (refer to ESCS Business Data Architecture document for further details). Only those entities within the boundary square are to be part of the particular data standard. Those entities outside of the boundary square are for context purposes only, or are separate reference data (orange coloured entities)

### *Entity and Attribute Naming Standards and Conventions used*

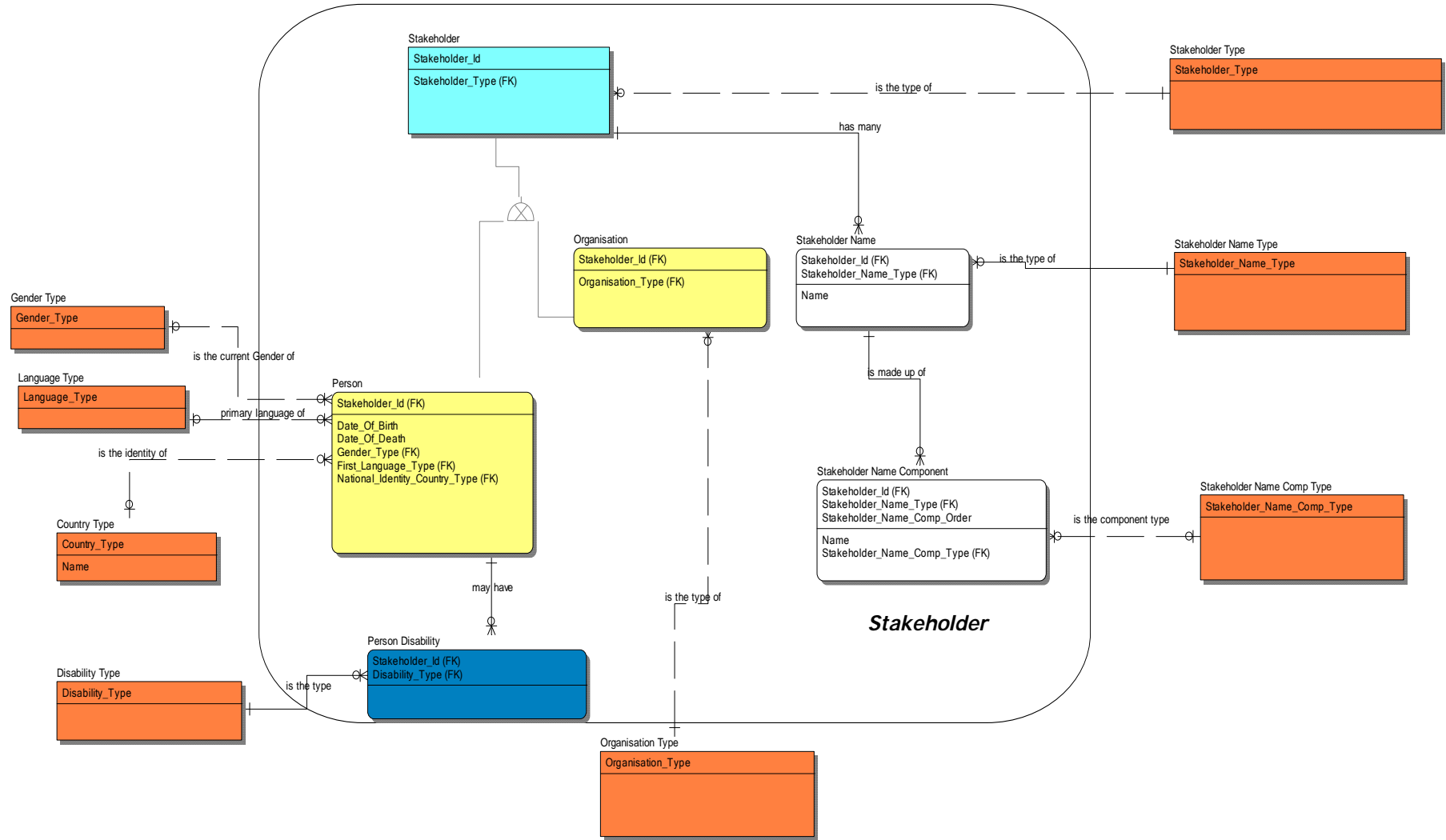
The standards for Business Data Architecture naming and conventions used for this development is Business Data Architecture Naming Standards and Conventions Vs 1.2 by Steve Palmer.

**Entity Definition Model**





**Attribute Model**



**Data definitions**

The following section further describes the entities and their attributes covered in this standard.

PK = Primary Key Attribute

FK =Foreign Key Attribute

M = Mandatory Attribute

**NOTE: Data Types are defined according to the conventions set out in the document “BDM Data Standard – Data Type Expressions”**

**Entity: Stakeholder**

A PERSON or ORGANISATION who is known to and recorded by the Education, Skills, and Children's Services 'system'.

Attribute Name	Attribute Definition	P K	F K	M	Datatype	Parent Entity	Parent Attribute	Code List
Stakeholder_Id	A value that denotes and distinguishes the STAKEHOLDER	Y	N	Y	Simple_String (1, 32)			
Stakeholder_Type	A Code that identifies the type of STAKEHOLDER ie a PERSON, ORGANISATION	N	Y	Y	Simple_String (1,32)			(see below)

**Entity SubType: Stakeholder - Person**

An individual with attributes that relate to that PERSON regardless of the role that they may be in at any one time.

Attribute Name	Attribute Definition	P K	F K	M	Datatype	Parent Entity	Parent Attribute	Code List
Stakeholder_Id	A value that denotes and distinguishes the STAKEHOLDER	Y	Y	Y	Simple_String (1, 32)	Stakeholder	Stakeholder_Id	
Date_Of_Birth	The date on which the person was born or was officially deemed to have been born for public administration purposes.	N	N	N	Simple_Date			
Date_Of_Death	The date on which the person is officially deemed to have died.	N	N	N	Simple_Date			
Gender_Type	A Code that identifies the gender of the PERSON.	N	Y	N	Simple_String (1, 25)			CL_Gender_Type
First_Language_Type	A Code that identifies the language of the PERSON.	N	Y	N	Simple_String (1, 25)			CL_Language_Type
National_Identity_Country_Type	A Code that denotes and distinguishes countries	N	Y	N	Simple_String (1, 25)			CL_Country_Type

**Entity SubType: Stakeholder – Organisation**

A group of PERSONs identified by a shared interest or purpose. Can also be a Team or Department

Attribute Name	Attribute Definition	P K	F K	M	Datatype	Parent Entity	Parent Attribute	Code List
Stakeholder_Id	A value that denotes and distinguishes the STAKEHOLDER	Y	Y	Y	Simple_String (1, 32)	Stakeholder	Stakeholder_Id	
Organisation Type Id	A Code that identifies a class of ORGANISATION Within a classification scheme that is independent of its role e.g. NDPB, Local Authority, Government Body etc.	N	Y	Y	Simple_String (1, 32)			CL_Organisation_Type

**Entity: Stakeholder Name**

The names that a STAKEHOLDER may use.

Attribute Name	Attribute Definition	P K	F K	M	Datatype	Parent Entity	Parent Attribute	Code List
Stakeholder_Id	A value that denotes and distinguishes the STAKEHOLDER	Y	Y	Y	Simple_String (1, 32)	Stakeholder	Stakeholder_Id	
Stakeholder_Name_Type	A Code that identifies the category of STAKEHOLDER NAME e.g.(preferred, alternative, legal, known-as	Y	Y	Y	Simple_String (1, 25)			CL_Stakeholder_Name_Type

Name	The NAMES used by a STAKEHOLDER	N	N	N	Simple_String (1, 100)			
------	---------------------------------	---	---	---	---------------------------	--	--	--

**Entity: Stakeholder Name Component**

The individual NAME COMPONENTs that make a name ie MR ALAN BRADSHAW OBE - each of these is a NAME COMPONENT

Attribute Name	Attribute Definition	P K	F K	M	Datatype	Parent Entity	Parent Attribute	Code List
Stakeholder_Id	A value that denotes and distinguishes the STAKEHOLDER	Y	Y	Y	Simple_String (1, 32)	Stakeholder Name	Stakeholder_Id	
Stakeholder_Name_Type	A Code that identifies the type of STAKEHOLDER NAME e.g.(preferred, alternative, legal, known-as	Y	Y	Y	Simple_String (1, 25)			
Stakeholder_Name_Comp_Order	The sequence order of the NAME COMPONENT appears within the set of name components	Y	N	Y	Simple_Integer (1, 2)			
Name	The NAMES used by a STAKEHOLDER	N	N	N	Simple_String (1, 100)			

Stakeholder_Name_Comp_Type	A Code that identifies the types of component involved in a STAKEHOLDER NAME e.g. Title, Given Name, Family Name, Suffix	N	Y	N	Simple_String (1, 25)			CL_Stakeholder_Name_Comp_Type
----------------------------	--	---	---	---	-----------------------	--	--	-------------------------------

**Entity: Person Disability**

The categories of disability (A physical or mental condition that limits a PERSON's movements, senses, or activities).

Attribute Name	Attribute Definition	P K	F K	M	Datatype	Parent Entity	Parent Attribute	Code List
Stakeholder_Id	A value that denotes and distinguishes the STAKEHOLDER	Y	Y	Y	Simple_String (1, 32)	Stakeholder	Stakeholder_Id	
Disability_Type	A Code that identifies the characterises the disability of a PERSON	Y	Y	Y	Simple_String(1,25)			CL_Disability

## Embedded Code Lists

The following code lists are intrinsic to this data standard and are as such presented here instead of in a separate standard document.

### Stakeholder\_Type

**Description:** The code that identifies the type of stakeholder.

List Of Values
Organisation
Person