

**BDM Data Standard – Learning Opportunity  
Award  
v0.5  
09 November 2009**

## **Licence and IPR Statement**

### ***Use of Crown copyright material © Crown copyright 2009***

The Information Standards Board (ISB) is an internal advisory body to the Department for Children, Schools and Families (DCSF) and the Department for Business, Innovation and Skills (BIS) which are Crown bodies. The information we produce is subject to Crown copyright, which is administered by the Office of Public Sector Information. Unless otherwise stated on individual documents or pages, the following copyright statement applies to material found on this site.

Authorisation to reproduce any information in this standard which is identified as being the copyright of a third party must be obtained from the copyright holders concerned.

### ***Research and private study***

The Crown copyright protected information in this standard may be reproduced free of charge in any format or medium in order to carry out research for non-commercial purposes, for private study or for internal circulation within an organisation. This is subject to the material being reproduced accurately and not used in a misleading context. The material must be acknowledged as Crown copyright and you must give the title of the source document/publication.

### ***Licences***

Copying Crown copyright protected material for re-use, distribution or publication, requires a licence. You can apply for a Click-Use licence online, by email or by writing to:

Office of Public Sector Information  
Information Policy Team  
Kew  
Richmond  
Surrey  
TW9 4DU  
Email: [licensing@opsi.gsi.gov.uk](mailto:licensing@opsi.gsi.gov.uk)

## Document Version History

Version	Status	Date	Modified by	Change description	Section & line Ref	Changed from	Changed to	Effects of change
0.1	Draft	18/09/2009	DFoster	Initial Draft	-	-	-	-
0.2	Draft	01/10/2009	LHogarth	Amended attribute structure to satisfy Registration requirements	-	-	-	-
0.3	Draft	30/10/2009	LHogarth	Amended attribute structure and definitions to satisfy Application and enrolment requirements	-	-	-	-
0.4	Draft	03/11/2009	TKnowles LHogarth	Amended Attributes Definitions Amended Document Map updated to show Side Notes and Appendix replaced with a reference to new document				
0.5	Draft	09/11/2009	LHogarth	Definitions Amended				

## Contents

Introduction .....	2
Data Standard.....	4
Entity relationships .....	4
Diagram Notation.....	4
Entity and Attribute Naming Standards and Conventions used .....	4
Entity Definition Model .....	5
Attribute Model.....	6
Data definitions.....	7
Entity: Learning Opportunity Award .....	7

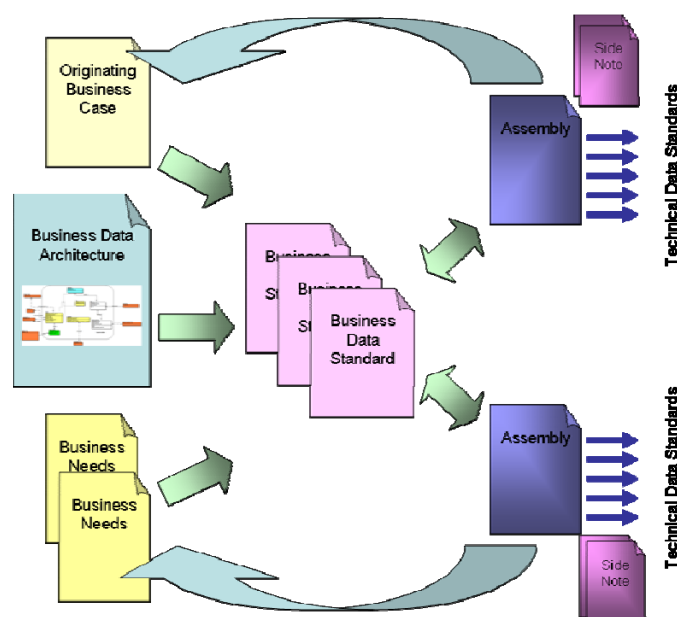
## Introduction

This Business Data Standard has been designed to satisfy all Education Skills and Children’s Services (ESCS) business needs to exchange information about Learning Opportunity Awards.

It describes data that relates to a Learning Opportunity Award. A Learning Opportunity Award is defined as a pass (predicted or actual) in an examination or an official completion of a course.

A Business Data Standard is defined in response to a business need captured in a Business Case. In development, every effort is made to ensure that the Business Data Standard is capable to support all ESCS business needs for the same data. The Business Case may in fact give rise to a number of Business Data Standards, and the way that the standards are associated to meet the originating business need is shown via an “Assembly” document. Each Assembly may in addition need some guidance regarding Data Quality issues and implementation issues and these are contained in “Side Notes”.

The related documents are shown in the following diagram:



Many ESCS ICT systems will need to define Technical Data Standards that specify an encoding schema for data exchange and may include implementation-specific details. Such Technical Data Standards may conform to this and other ESCS ISB Business Data Standards. Those that do conform can be assured that their data will be interchangeable with any other conformant systems. A Technical Data Standard may indicate that within the scope of its use one or more attributes are Mandatory.

This Business Data Standard shows how information relating to Learning

Opportunity Award shall be structured into entities and relationships according to the ESCS Business Data Architecture and enumerates and defines each information attribute in terms of:

- The relationships between entities in this standard and further entities defined in other standards
- The semantics, or meaning, of each entity and each attribute
- The data type, field length and construction rules for each attribute in an encoding-independent manner.
- Where the value of an attribute is to be defined by a list of permitted values (a “code list”), a reference to the relevant code list standard
- Where the standard relates to information defined by a standard from an external organisation (ISO, BSI, CEN etc) then this will also be noted.
- Any business rules (e.g. mandatory status) that are true for *every* business use of the standard.

Many ESCS ICT systems will need to define Technical Data Standards that specify an encoding schema for data exchange and may include implementation-specific details. Such Technical Data Standards may conform to this and other ESCS ISB Business Data Standards. Those that do conform can be assured that their data will be interchangeable with any other conformant systems. A Technical Data Standard may indicate that within the scope of its use one or more attributes are Mandatory.

## **Data Standard**

### **Entity relationships**

The following diagrams shows the entities covered in this standard and their relationships to each other. The diagrams are:

- Entity Definition Model – A high level diagram extracted from the ESCS Business Data Architecture showing just the entities, their descriptions and the relationships between the entities.
- Attribute Model – A lower level diagram also extracted from the ESCS Business Data Architecture showing the entities and the names of their attributes. Entities are divided into two sections. The top section contains only attributes that form the primary key of the entity and the remaining attributes are in the bottom section.

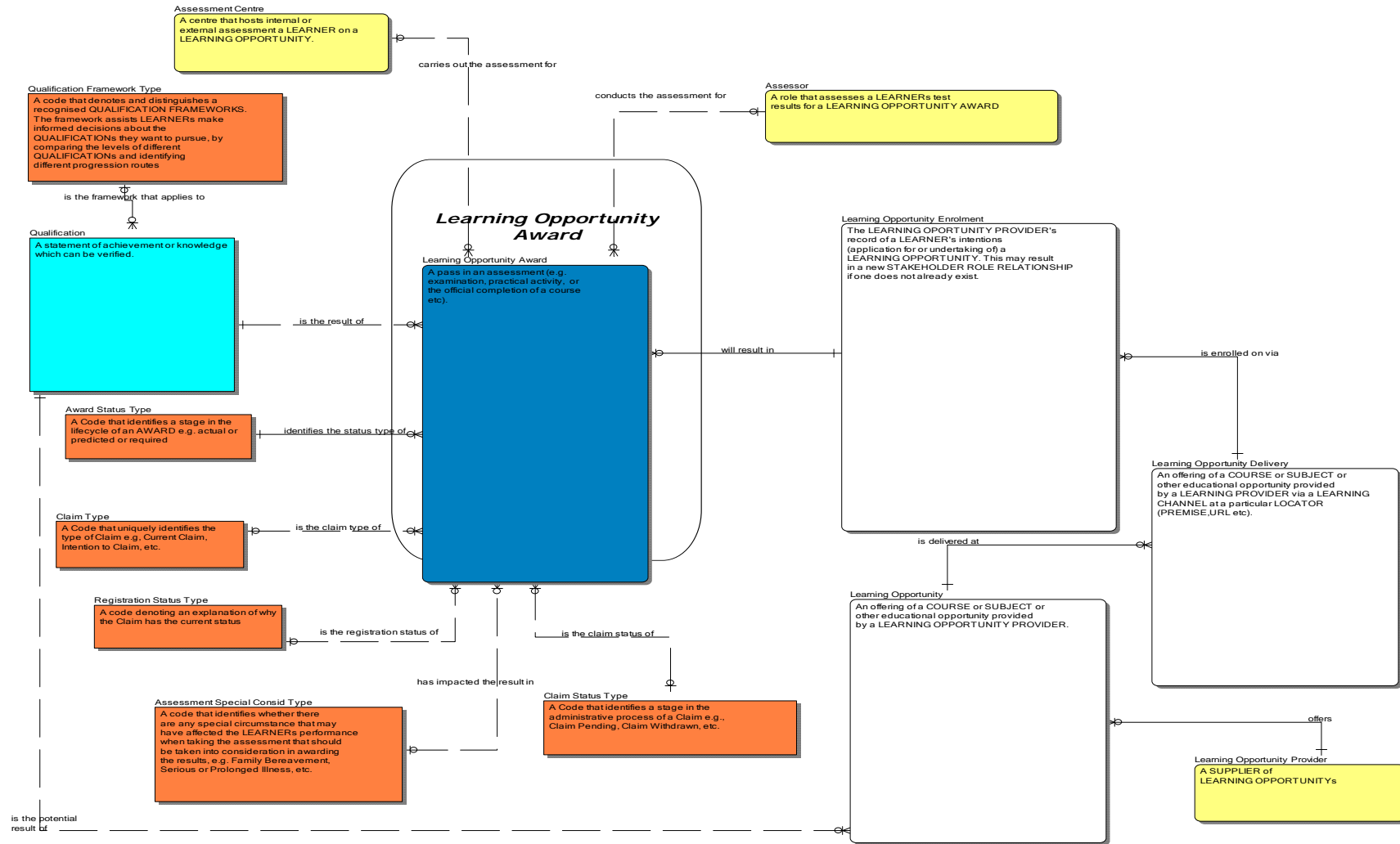
### ***Diagram Notation***

The notation used follows the Business Data Architecture Document notation (refer to ESCS Business Data Architecture document for further details). Only those entities within the boundary square are to be part of the particular data standard. Those entities outside of the boundary square are for context purposes only, or are separate reference data (orange coloured entities)

### ***Entity and Attribute Naming Standards and Conventions used***

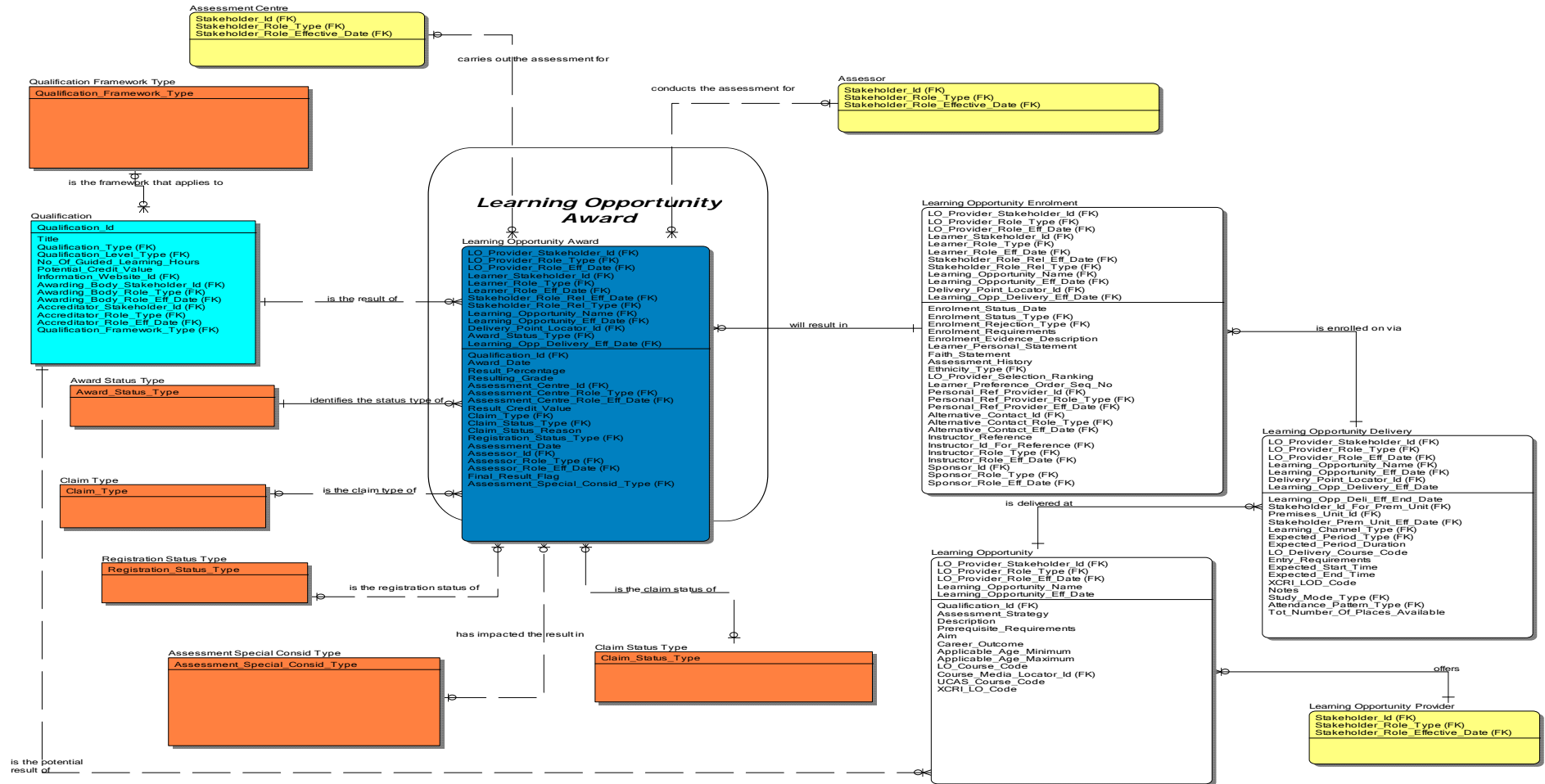
The standards for Business Data Architecture naming and conventions used for this development is Business Data Architecture Naming Standards and Conventions Vs 1.2 by Steve Palmer.

### Entity Definition Model





### Attribute Model



## Data definitions

The following section further describes the entities and their attributes covered in this standard.

PK = Primary Key Attribute

FK = Foreign Key Attribute

M = Mandatory Attribute

**NOTE: Data Types are defined according to the conventions set out in the document “BDM Data Standard – Data Type Expressions”**

### Entity: Learning Opportunity Award

A pass in an assessment (e.g. examination, practical activity, or the official completion of a course etc).

Attribute Name	Attribute Definition	P K	F K	M	Datatype	Parent Entity	Parent Attribute	Code List
LO_Provider_Stakeholder_Id	A value that denotes and distinguishes the STAKEHOLDER	Y	Y	Y	Simple_String (1, 32)	Learning Opportunity Enrolment	LO_Provider_Stakeholder_Id	

LO_Provider_Role_Type	A Code that identifies a specific role of a STAKEHOLDER.e.g. LEARNER, LEARNING OPPORTUNITY PROVIDER. This attribute may appear prefixed with the role that is currently being undertaken. In this event the role_type is that specifically named role	Y	Y	Y	Simple_String (1, 50)	Learning Opportunity Enrolment	LO_Provider_Role_Type	
LO_Provider_Role_Eff_Date	The date from which the STAKEHOLDER is ready and approved (if necessary) to act in the specific role. This attribute may appear prefixed with a role type. In this event the effective date is that of the prefixed role type.	Y	Y	Y	Simple_Date_Time	Learning Opportunity Enrolment	LO_Provider_Role_Eff_Date	
Learner_Stakeholder_Id	A value that denotes and distinguishes the STAKEHOLDER	Y	Y	Y	Simple_String (1, 32)	Learning Opportunity Enrolment	Learner_Stakeholder_Id	
Learner_Role_Type	A Code that identifies a specific role of a STAKEHOLDER.e.g. LEARNER, LEARNING OPPORTUNITY PROVIDER. This attribute may appear prefixed with the role that is currently being undertaken. In this event the role_type is that specifically named role	Y	Y	Y	Simple_String (1, 50)	Learning Opportunity Enrolment	Learner_Role_Type	

Learner_Role_Eff_Date	The date from which the STAKEHOLDER is ready and approved (if necessary) to act in the specific role. This attribute may appear prefixed with a role type. In this event the effective date is that of the prefixed role type.	Y	Y	Y	Simple_Date_Time	Learning Opportunity Enrolment	Learner_Role_Eff_Date	
Stakeholder_Role_Rel_Eff_Date	The date from which the stakeholder role relationship commenced	Y	Y	Y	Simple_Date_Time	Learning Opportunity Enrolment	Stakeholder_Role_Rel_Effective_Date	
Stakeholder_Role_Rel_Type	A Code that identifies a specific relationship between STAKEHOLDER ROLES e.g. LEARNER and LEARNING OPPORTUNITY PROVIDER. Tutor Group, Class, Consortium etc	Y	Y	Y	Simple_String (1, 50)	Learning Opportunity Enrolment	Stakeholder_Role_Rel_Type	
Learning_Opportunity_Name	A value that denotes the LEARNING OPPORTUNITY	Y	Y	Y	Simple_String (1, 255)	Learning Opportunity Enrolment	Learning_Opportunity_Name	
Learning_Opportunity_Eff_Date	The date and time from which the LEARNING OPPORTUNITY is offered to LEARNERS.	Y	Y	Y	Simple_Date_Time	Learning Opportunity Enrolment	Learning_Opportunity_Eff_Date	
Delivery_Point_Locator_Id	A value that denotes and distinguishes the LOCATOR.	Y	Y	Y	Simple_String (1,36)	Learning Opportunity Enrolment	Delivery_Point_Locator_Id	
Award_Status_Type	A Code that identifies a stage in the lifecycle of an AWARD e.g. actual or predicted or required	Y	Y	Y	Simple_String(1,20)			CL_Award_Status_Type

Learning_Opp_Delivery_Eff_Date	The date and time from which the LEARNING OPPORTUNITY DELIVERY will take place.	Y	Y	Y	Simple_Date_Time	Learning Opportunity Enrolment	Learning_Opp_Delivery_Eff_Date	
Qualification_Id	A value that denotes and uniquely distinguishes in combination with the awarding stakeholder. Currently this is expected to be the QCA's QAN number	N	Y	Y	Simple_String(1,50)	Qualification	Qualification_Id	
Award_Date	The date that this AWARD was announced	N	N	N	DATE			
Result_Percentage	The marks of the AWARD ASSESSMENT expressed as a percentage	N	N	N	Simple_Integer(1,3)			
Resulting_Grade	The outcome of an AWARD ASSESSMENT expressed as a Grade	N	N	N	Simple_String(1,10)			
Assessment_Centre_Id	A value that denotes and distinguishes the STAKEHOLDER	N	Y	N	Simple_String(1, 32)	Stakeholder Role	Stakeholder_Id	
Assessment_Centre_Role_Type	A Code that identifies the specific role of a STAKEHOLDER.e.g. LEARNER, LEARNING OPPORTUNITY PROVIDER. This attribute may appear prefixed with the role that is currently being undertaken. In this event the role_type is that specifically named role	N	Y	N	Simple_String(1, 50)	Stakeholder Role	Stakeholder_Role_Type	

Assessment_Centre_Role_Eff_Date	The date from which the STAKEHOLDER is ready and approved (if necessary) to act in the specific role. This attribute may appear prefixed with a role type. In this event the effective date is that of the prefixed role type.	N	Y	N	Simple_Date_Time	Stakeholder Role	Stakeholder_Role_Eff_Date	
Result_Credit_Value	The credits accrued to the LEARNER from the QUALIFICATION awarded	N	N	N	Simple_Integer(1,3)			
Claim_Type	A Code that identifies the type of Claim e.g, Current Claim, Intention to Claim, etc.	N	Y	N	Simple_String(1,50)			CL_Claim_Type
Claim_Status_Type	A Code that identifies a stage in the administrative process of a Claim e.g., Claim Pending, Claim Withdrawn, etc.	N	Y	N	Simple_String(1,50)			CL_Claim_Status_Type
Claim_Status_Reason	The reason why the Claim has the current status	N	N	N	Simple_String(1,2000)			
Registration_Status_Type	A code denoting an explanation of why the Claim has the current status	N	Y	N	Simple_String(1,35)			CL_Registration_Status_Type
Assessment_Date	The date of the Assessment	N	N	N	Simple_Date_Time			
Assessor_Id	A value that denotes and distinguishes the STAKEHOLDER	N	Y	N	Simple_String(1, 32)	Stakeholder Role	Stakeholder_Id	

Assessor_Role_Type	A Code that identifies a specific role of a STAKEHOLDER.e.g. LEARNER, LEARNING OPPORTUNITY PROVIDER. This attribute may appear prefixed with the role that is currently being undertaken. In this event the role_type is that specifically named role	N	Y	N	Simple_String (1, 50)	Stakeholder Role	Stakeholder_ Role_Type	
Assessor_Role_Eff_Date	The date from which the STAKEHOLDER is ready and approved (if necessary) to act in the specific role. This attribute may appear prefixed with a role type. In this event the effective date is that of the prefixed role type.	N	Y	N	Simple_Date_Ti me	Stakeholder Role	Stakeholder_ Role_Eff_Dat e	
Final_Result_Flag	A code that indicates the Learner's wish to use this result or not. For example, the Learner may wish to re-take the assessment to try to get a better result. Value Y or N	N	N	N	Simple_Flag			
Assessment_Special_Consid_Type	A code that identifies whether there are any special circumstance that may have affected the LEARNERs performance when taking the assessment that should be taken into consideration in awarding the results, e.g. Family Bereavement, Serious or Prolonged Illness, etc.	N	Y	N	Simple_String(1 ,35)			CL_ Assessment_ Special_Cons id_Type