

Business Data Assembly - Attendance

Version 0.2

4 November 2009



Licence and IPR Statement

Use of Crown copyright material © Crown copyright 2009

The Information Standards Board (ISB) is an internal advisory body to the Department for Children, Schools and Families (DCSF) and the Department for Business, Innovation and Skills (BIS) which are Crown bodies. The information we produce is subject to Crown copyright, which is administered by the Office of Public Sector Information. Unless otherwise stated on individual documents or pages, the following copyright statement applies to material found on this site.

Authorisation to reproduce any information in this standard which is identified as being the copyright of a third party must be obtained from the copyright holders concerned.

Research and private study

The Crown copyright protected information in this standard may be reproduced free of charge in any format or medium in order to carry out research for non-commercial purposes, for private study or for internal circulation within an organisation. This is subject to the material being reproduced accurately and not used in a misleading context. The material must be acknowledged as Crown copyright and you must give the title of the source document/publication.

Licences

Copying Crown copyright protected material for re-use, distribution or publication, requires a licence. You can apply for a Click-Use licence online, by email or by writing to:

Office of Public Sector Information
Information Policy Team
Kew
Richmond
Surrey
TW9 4DU
Email: licensing@opsi.gsi.gov.uk

Document Version History

Version	Status	Date	Modified by	Change description	Section & line Ref	Changed from	Changed to	Effects of change
0.1	Draft	21/09/2009	DFoster	Initial Draft	-	-	-	-
0.2	Draft	4/11/2009	T Knowles	Second draft – revised following external review comments on V1				

Contents

Introduction	4
Scope	4
Document Map	5
ISB Data Standards Used	6
Business Processes	7
Process Roles	7
Data Item Mapping	9
Business Data Standard Map.....	13
Data Exchanges	14

Introduction

This Business Data Assembly document shows how to assemble and use the relevant Business Data Standards to meet the needs identified in the Attendance Business Case.

As a result of consultation on the Business Case and further business analysis, the business processes and supporting data items have progressed from those shown in the business case that initiated the work. The resultant current processes, roles and business data items are therefore listed here.

Scope

The Business Data Assembly describes:

- How to use the Business Data Standards in a given business context
- The business processes and roles representing the current understanding of ESCS-wide processes and roles that support finding, applying for and enrolling into a provider of learning for the purposes of undertaking one or more courses of learning.
- The mapping of the ISB Business Data Standards to one another in a relational model.
- The identified data exchanges inherent in the Attendance business process, the subset of standards that apply to each data transfer and any variations that need to be applied to satisfy the business conditions of that data transfer.

It is not in the scope of this document to describe:

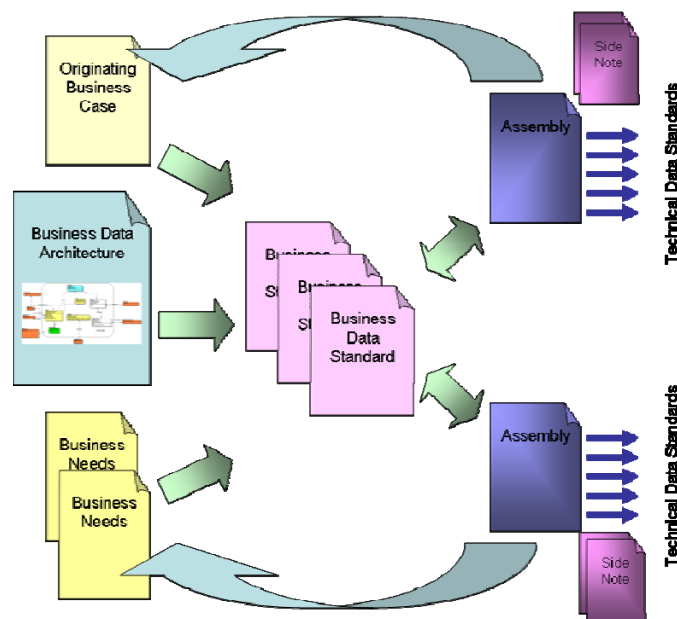
- The details of all of the attributes contained in the data standards.
- A preferred method of implementing the assembly in an application.

An Assembly document does not define any schema, e.g. XML, it may be realised through to any number of Technical Data Standards (see below).

Document Map

A Business Data Standard is defined in response to a business need captured in a Business Case. In development, every effort is made to ensure that the Business Data Standard is capable to support all Education Skills and Children’s Services (ESCS) business needs for the same data. The Business Case may in fact give rise to a number of Business Data Standards, and the way that the standards are associated to meet the originating business need is shown via an “Assembly” document. Each Assembly may in addition need some guidance regarding Data Quality issues and implementation issues and these are contained in “Side Notes”.

The related documents are shown in the following diagram:



Many ESCS ICT systems will need to define Technical Data Standards that specify an encoding schema for data exchange and may include implementation-specific details. Such Technical Data Standards may conform to this and other ESCS ISB Business Data Standards. Those that do conform can be assured that their data will be interchangeable with any other conformant systems. A Technical Data Standard may indicate that within the scope of its use one or more attributes are Mandatory.

ISB Data Standards Used

The following Data Standards are referenced in this Business Data Assembly. For details about individual entities and attributes please refer to the relevant data standard.

ISB Data Standard	Version of Standard
Learning Opportunity	0.3
Learning Opportunity Award	0.4
Learning Opportunity Delivery	0.2
Learning Opportunity Enrolment	0.4
Locator	0.3
Qualification	0.3
Stakeholder	0.3
Stakeholder Contact	0.3
Stakeholder Role	0.6
Stakeholder Schedule	0.2
Premises	0.3
Learner attendance period	0.2

Business Processes

The following business processes have been created in consultation with stakeholders across ESCS. They are high level processes whose intention is to be sufficiently generic that all processes relating to attendance are encompassed.

Note that the reader must first consider how roles (identified in the process “swim-lanes”) are mapped onto persons or organisations in their area. For example, the roles of “Application Manager applied to”, and Curriculum Lead Centre will in most cases both be taken by a school for primary and secondary school applications, but may be taken by different members of a Consortium that supplies Diploma learning.

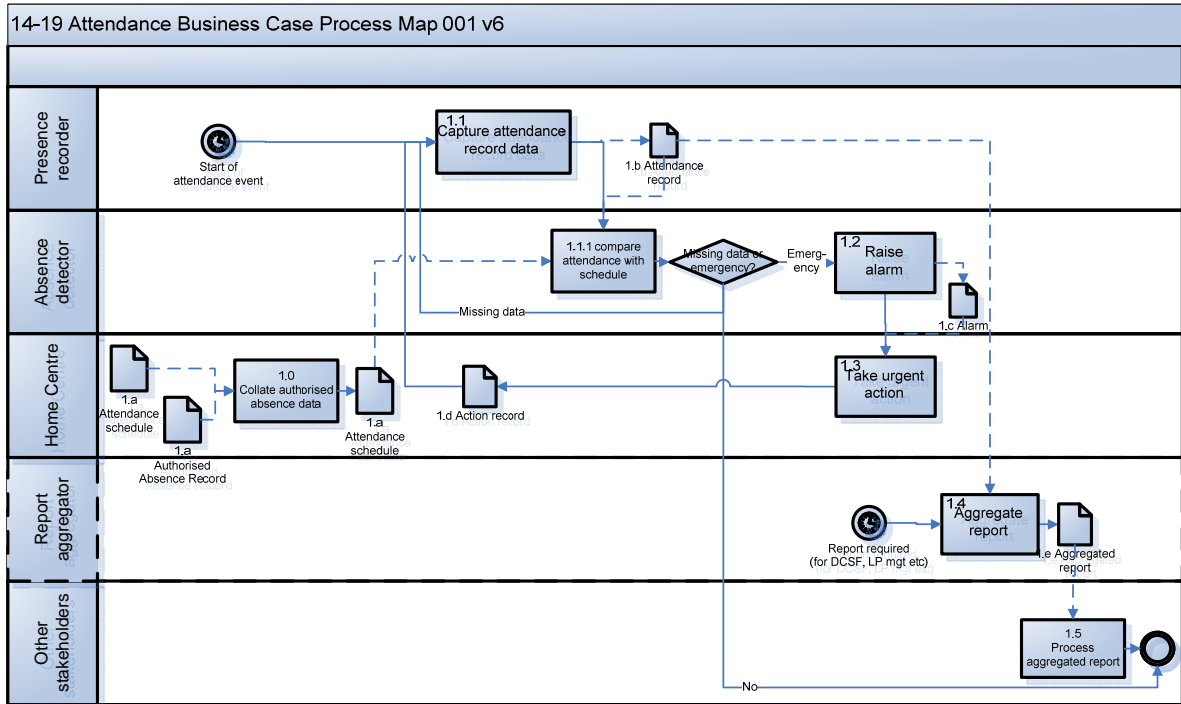
The reader must also be willing to consider how the process steps are manifested in their case. For example, step 3.01 “Learning Opportunity details made available” may relate to publication of course-related information in a prospectus for FE or HE institutions and may be a simple matter of making the existence of a school known to an LA in the case of statutory education.

Process Roles

The following roles take part in the Attendance Process

List of Roles	Description
Presence recorder	The role (person or system) who records the attendance of a learner at a Learning Opportunity Provider.
Absence detector	The role (person or system) who reconciles a learner’s expected attendance against their actual attendance at a Learning Opportunity Provider and ensures appropriate action is taken.
Home Centre	Organisation which discharges legal duty of care (if any) and pastoral care for an enrolled Learner
Report aggregator	The person or organisation that collects together and analyses behaviour event records

Currently this document cover processes 1.0, 1.1, 1.2 and data exchanges 1.a and 1.b. Processes 1.3, 1.4, 1.5 and their associated data exchanges are to be covered in a subsequent release of this assembly document.



Data Item Mapping

The following table maps the Data Items from the Attendance Business Case to Entities, Subtype/s and attributes from the business data model and to the related business data standard.

Data Item from Business Case	Data Model		Data Standard/s
	Entity / Subtype	Attribute	
Learning Provider Identification	Stakeholder	Stakeholder_Id,	Stakeholder
Learning Provider Type		Not needed. This was introduced to allow for the possibility that attendance code lists may need to be different between types of Learning Opportunity Providers. A single combined code list has been developed.	
Timetable Event	Stakeholder Period	compound Key	Stakeholder Schedule/
Learning Opportunity Identifier	Learning Opportunity Enrolment	compound key	Learning Opportunity
Learning Opportunity Type	Learning Opportunity Delivery	Learning_Channel_Type	Learning Opportunity

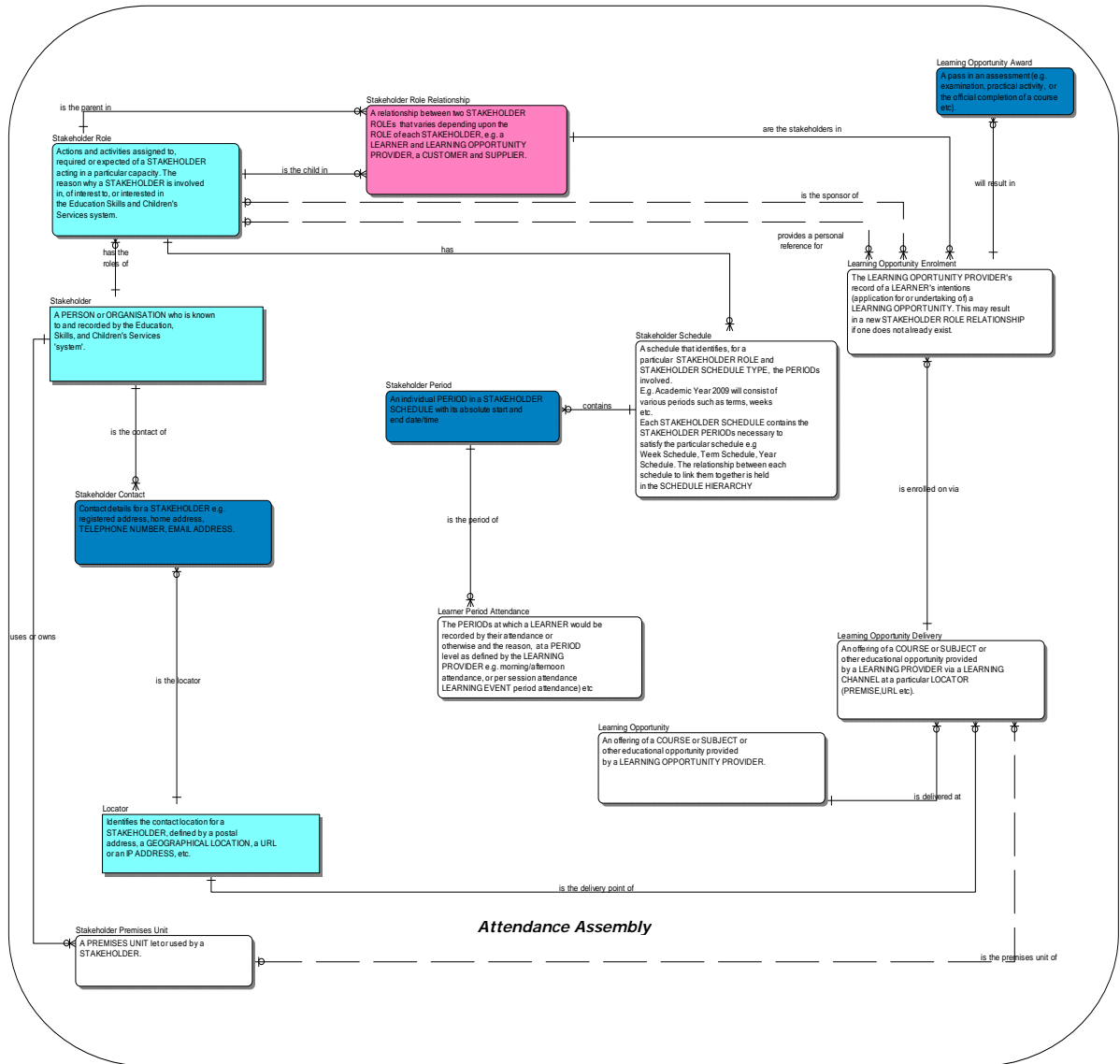
Data Item from Business Case	Data Model		Data Standard/s
	Entity / Subtype	Attribute	
Learning Opportunity Options	Learning Opportunity Enrolment	[The Learning Opportunity Options are represented by a Learning Opportunity Enrolment record for each Learning Opportunity the learner opts for]	Learning Opportunity Enrolment
Start Time	Stakeholder Period	Stakeholder_Sched_Period_Eff_Date	Stakeholder Schedule
End Time	Stakeholder Period	Stakeholder_Sched_Period_End_Date	Stakeholder Schedule
Event Location Type *	Stakeholder Period Attendance	Attendance_Period_Loc_Type	Stakeholder Period Attendance
Learner identification:	n/a	n/a	n/a
Learner Identifier	Stakeholder	Stakeholder_id	Stakeholder
Given Name	Stakeholder Name Component	Stakeholder_Id, Stakeholder_Name_Type(Legal), Stakeholder_Name_Component_Type ("Given")	Stakeholder

Data Item from Business Case	Data Model		Data Standard/s
	Entity / Subtype	Attribute	
Family Name	Stakeholder Name Component	Stakeholder_Id, Stakeholder_Name_Type(Legal),,Stakeholder_Name_Component_Type ("Family")	Stakeholder
DoB	Person	Date_Of_Birth	Stakeholder
Address	Stakeholder Contact/Locator/Postal Address or Geographical Location	Locator_Type("Residence")	Stakeholder Contact, Locator
Status of Attendance *	3 code lists resolve this – Attendance Status Type, Learner Absentee Reason Type and Absence Authorisation Type	3 code lists resolve this – Attendance_Status_Type, Learner_Absentee_Reason_Type and Absence_Authorisation_Type	Stakeholder Period Attendance
Person Identification	Stakeholder Period Attendance	Attendance_Recorder_Id	Stakeholder Period Attendance
Predicted Grades *	Learning Opportunity Award	compund Key	Learner Opportunity Award

Data Item from Business Case	Data Model		Data Standard/s
	Entity / Subtype	Attribute	
Attestation of recorder	Stakeholder Period Attendance	Attestation_Of_Recorder	Stakeholder Period Attendance
Record Creation Timestamp	Stakeholder Period Attendance	Create_User_Id,Create_Time stamp,Last_Update_User_Id,L ast_Update_Timestamp	Stakeholder Period Attendance
Comment	Stakeholder Period Attendance	Create_User_Id,Create_Time stamp,Last_Update_User_Id,L ast_Update_Timestamp	Stakeholder Period Attendance

Business Data Standard Map

The following diagrams show the business data standard documents and how they interrelate. Please note that each standard can contain several data entities, so this diagram should not be interpreted as a true entity relationship diagram. For that level of detail please refer to the individual standards.



Data Exchanges

The data exchanges in the table below relate to those shown in the process models in the Business Processes section above:

Data Exchange	Data Standards	Context specific rules
1a – Absence event list	Stakeholder	None
	Stakeholder Contact	None
	Stakeholder Role	None
	Premises Unit	None
	Locator	None
	Qualification	None
	Learning Opportunity	None
	Learning Opportunity Award	None
	Stakeholder Schedule	None
	Stakeholder Period Attendance	None
1b – Attendance Record	Stakeholder	None
	Stakeholder Contact	None
	Stakeholder Role	None
	Premises Unit	None
	Locator	None

	Qualification	None
	Learning Opportunity	None
	Learning Opportunity Award	None
	Stakeholder Schedule	None
	Stakeholder Period Attendance	None